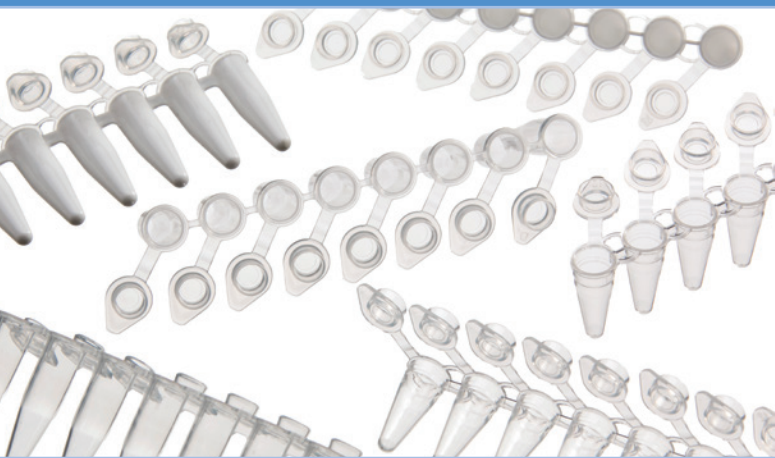


Your **Power** for Health



greiner bio-one



Sapphire
PCR Consumables

PCR At Its Best

www.gbo.com/bioscience

Sapphire PCR Consumables

PCR At Its Best

Greiner Bio-One launches a new PCR product line under its brand name Sapphire. The Sapphire PCR product portfolio comprises a full range of PCR reaction vessels and microplates for all major PCR applications. New additions to the product line illustrate our long-standing commitment to developing innovations that improve your workflow.

- Manufactured out of medical-grade polypropylene without interfering additives
- Thin-walled for efficient heat transfer during amplification
- Free of detectable DNase, RNase and endotoxin
- Suitable for real-time / quantitative PCR
- Comprehensive thermal cycler compatibility
- Innovative **NEW** ergonomic 8-strip tubes/caps improve sample handling
- Innovative **NEW** “Rigid” style 96-well PCR microplate is ideal for automated PCR assembly
- New microplates expand our offering for ABI and Roche cyclers
- Innovative **NEW** 8-strip tubes with attached caps improve sample handling

NEW Products

Greiner Bio-One has long been known as a manufacturer who brings innovation to the market, and our collection of new PCR consumables continues that tradition. We are proud to introduce two new 8-strip PCR tube/cap combinations that deliver exceptional performance with greatly improved cap closure ergonomics, as well as improved alphanumeric visibility for sample tracking. Further expanding our 8-strip tube line are a number of choices with attached caps to aid sample handling. A unique single optical tube for Real-Time PCR expands our line of PCR tubes, while an equally unique single-material “Rigid” style full-skirt 96-well PCR microplate adds an automation-friendly twist to your workflow. You will find further additions to aid labs looking to save on reagent costs via low-profile strip tubes and microplates designed to hold low-volume reaction mixes, as well as an expanded line of PCR microplates to accommodate an even wider array of industry-leading cyclers.



Free Samples
of the new PCR products
can be ordered on our
website www.gbo.com
or via e-mail to
info@us.gbo.com.

Sapphire PCR Consumables

Industry Leading Performance

Over our more-than-50 year history, Greiner Bio-One has built a reputation for producing quality products that perform among the best in the industry. Our Sapphire PCR consumables are no exception to this. We have data which clearly show that they deliver consistent performance that meets or exceeds the market's leading brands. We invite you to put them to the test in your workflow!

GBO Ergonomic Optical Strip Cap Significantly Improves on qPCR Sensitivity (Δ 2 Ct)

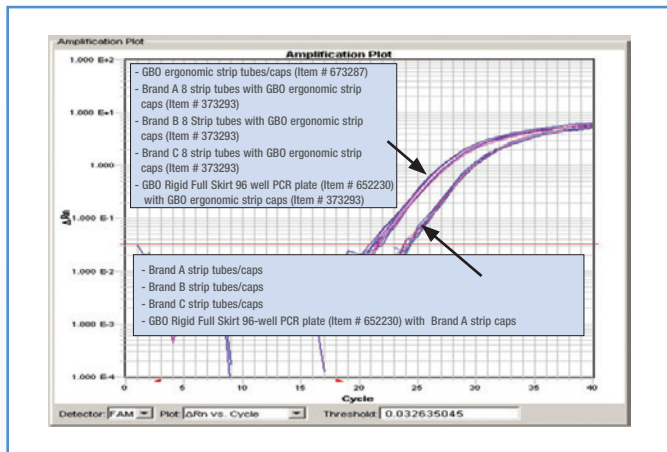


Figure 1: Eight replicates from Human gDNA were analyzed by qPCR for 18S with 10 ng input gDNA input. The qPCR reaction was placed in its designated tube as illustrated in the illustration plot. The qPCR reactions were performed using ABI 2x Taqman2 master mix and 1x primer/probe mix. Cycling conditions: 50°C 2 m > 95°C 10 m > (95°C 15 s > 60°C 1 m) 40 cycles

GBO PCR Consumables Deliver Performance Similar to Leading PCR Suppliers in the Market

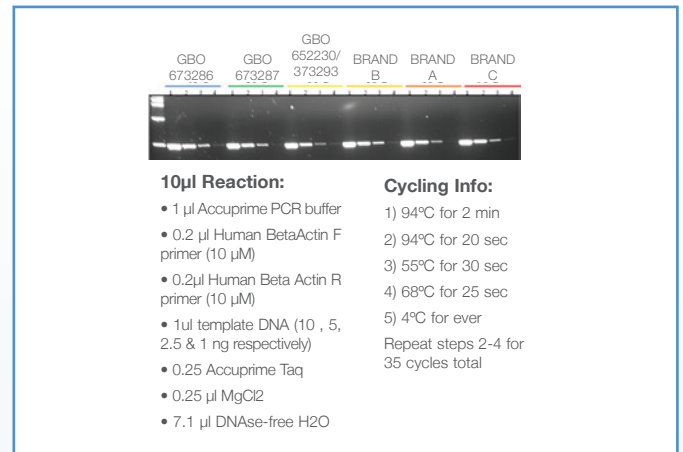


Figure 2: Equivalent band location and intensity for 4 concentrations of template DNA from PCR performed under identical conditions show amplification in GBO PCR consumables at par with the leading brands in the industry

PCR Tubes (0.2 / 0.5 mL)

- With flat or domed cap or without cap
- Available in different colors (■ ■ ■ ■ ■ ■ and assorted)
- Frosted tube caps for easy labeling
- Innovative NEW single tube with attached optically clear cap for Real Time PCR



Figure 4: 0.2 mL Sapphire PCR tubes with domed lid in different colors.

Sapphire PCR Consumables

8-Tube Strips and 8-Cap Strips

8-Tube Strips (0.2 mL)

- Available in different colors (, , , , , and assorted)
- Comprehensive thermal cycler compatibility
- Suitable for 8-cap strips

8-Cap Strips

- Flat ultra-clear 8-cap strips for real-time and quantitative PCR
- Domed 8-cap strips available in different colors (, , , , , and assorted)

8-Tube Strips with Caps

- Available with strip tubes and strip caps in the same packaging
- Unique NEW ergonomic strip combinations
- Innovative NEW strip tubes with attached caps
- NEW low-profile options for reagent savings

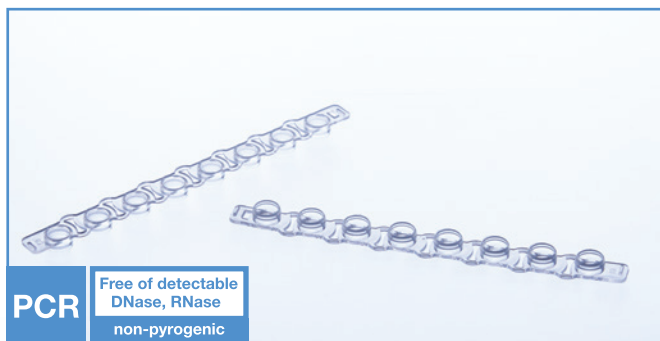


Figure 5: Sapphire 8-cap strips (flat) for Realtime PCR

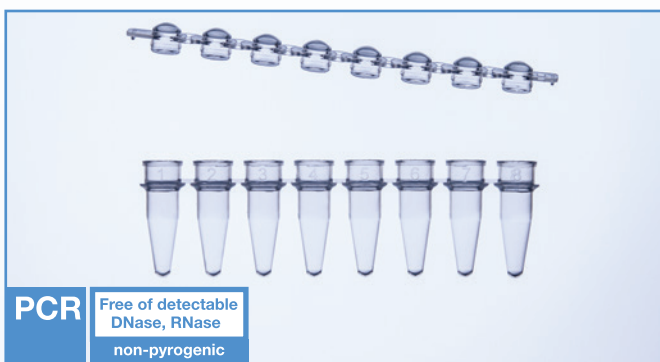
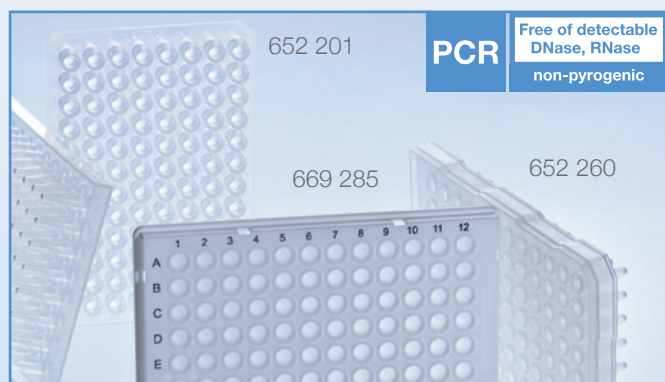


Figure 6: Sapphire 8-cap strips (domed) and Sapphire 8-tube strips

PCR Microplates

The Sapphire PCR product line includes a full range of 96 well and 384 well PCR microplates.

- 96 and 384 well without skirt, half-skirt and full-skirt
- Comprehensive thermal cycler compatibility
- Suitable for 8-cap strips, adhesive sealers and heat-sealing
- High-visibility black alphanumeric printing for rapid sample identification
- Innovative NEW “Rigid” style 96-well full skirt PCR microplate is ideal for automated PCR assembly
- NEW ABI “Fast”-style microplate fits all ABI cyclers with “Fast” block



Thermal Cycler Compatibility Guide

★ Optimal Fit		Model	652 201 unskirted, chimney top	652 250 unskirted, universal	652 260 semi-skirted, ABI+Design	652 240 semi-skirted, ABI "Fast" design	652 270 skirted	652 230 skirted, rigid style	652 290 semi-skirted, suitable for ABI	669 285, 652 285 semi-skirted	785 201 skirted	785 235, 785 286 skirted	785 290 skirted, suitable for ABI	
			96 well						384 well					
Applied Biosystems	Thermal Cyclers	2700	•	•	•				•				•	
		2720			★								•	
		6100			★									
		9600	•	•	•				•					
		9700	•	•	★				•					★
		9800 "FAST"				•								
		Veriti 0.2 mL			★	•			★					•
	Real Time Thermal Cyclers	5700		•	•				•					
		PRISM 7000		•	★				★					
		7300		•	★				★					
		7500		•	★				★					
		7500 "FAST"					•							
		7700		•	•				★					
		7900HT		•	★									•
		7900HT "FAST"					•							
		ViiA 7			★	•								•
		Quant Studio 12K Flex			•	★								•
	Sequencers	Step One PLus					•							
		PRISM 310	•	•	•	•			•					
		PRISM 3100	•	•	★	•			•					★
3130 (XL)		•	•	★	•			•					★	
3700		•	•	★	•			•					★	
PRISM 3730 (XL)		•	•	★	•			•					★	
Bio-Rad / MJ Research	Thermal Cyclers	Gene Cycler	•	•	•									
		PTC-100	•	•			★	★	•				•	
		PTC-200	•	•			★	★	•				•	
		PTC-225 Tetrad	•	•			★	★	•				•	
		Dyad/Dyad Disciple	•	•			★	★	•				•	
		iCycler	•	•			•	•	★					
		MyCycler	•	•										
		Mini Gradient		•										
		Personal		•					•					
		T100		★			★	★						
	Real Time Thermal Cyclers	DNA Engine family		•			•	•	•		•		•	
		C1000/S1000		•			•	•	•		•		•	
		Opticon/Opticon2		•			★	★						
		Chromo-4					•	•						
		iCycler	•	•			•	•	★					
		MyiQ	•	•			•	•	★					
		iQ5	•	•			•	•	★					
Sequencers	CFX Connect					•	•	•						
	CFX96					★	★							
	CFX384									•		•		
	BaseStation					•	•							
	Eppendorf	Thermal Cyclers	Mastercycler	•	•			•	•	•				
			Mastercycler ep Gradient	•	•	•		★	★	•				
Mastercycler M384											•		•	
Mastercycler Nexus				•			•	•	•					
Mastercycler Nexus Gradient				•			★	★	•					
Mastercycler Nexus Eco				•			•	•	•					
Mastercycler Pro			•			•	•	•		•		•		
Real Time Thermal Cyclers	Mastercycler ep Realplex	•	•			★	★	•						

The registered trademarks of the mentioned manufacturers belong to the above mentioned companies.

This compatibility chart is a general guide only and subject to error and modifications. We cannot accept any liability or responsibility for the above information.

Thermal Cycler Compatibility Guide

		Model	652 201 unskirted, chimney top	652 250 unskirted, universal	652 260 semi-skirted, ABI-Design	652 240 semi-skirted, ABI "Fast" design	652 270 skirted	652 230 skirted, rigid style	652 290 semi-skirted, suitable for ABI	669 285, 652 285 semi-skirted	785 201 skirted	785 235, 785 286 skirted	785 290 skirted, suitable for ABI
			96 well						384 well				
Amers- ham	Sequencers	MegaBACE 500					•	•					
		MegaBACE 1000					•	•					
		MegaBACE 4000											•
Beck- man	Sequencers	CEQ	•										
Biometra	Thermal Cyclers	Uno	•	•			•	•	•				
		Uno II	•	•					•				•
		T1 Thermal Cycler	•	•			•	•	•				•
		Tgradient	•	•			•	•	•				•
		Trobot	•	•			•	•	•				•
		T3000		•			•	•					•
Real Time Thermal Cyclers	T Professional		•			•	•					•	
	Topical		•			•	•					•	
Cor- bett	Thermal Cyclers	PalmCycler 96					•	•	•				
		PalmCycler 384											•
Ericom	Thermal Cyclers	Power Block I	•	•	•								
		Deltacycler I	•	•					•				
		Deltacycler II	•	•	•								
		Single Block	•	•						•			
Twin Block	•	•							•				
	•	•							•				
	•	•							•				
	•	•							•				
Esco	Thermal Cyclers	Swift	•	•					•				•
		Gene	•	•			•	•	•				•
		Genius	•	•			•	•	•				
G-Storm	Thermal Cyclers	GS1	•	•	•				•				
		GS2	•	•	•				•				
		GS4	•	•	•					•			
		GSX	•	•	•					•			
		GSXs	•	•	•					•			
MWG	Thermal Cyclers	Primus 96	•	•	•		•	•	•				
		Primus 384											•
Strate- gene	Thermal Cyclers	Robocycler 96		•									
		Robocycler Gradient	•	•	•		•	•	•				
Real Time Thermal Cyclers	Mx4000 and Mx3005P	•	•	•									
Ta- Ka- Ra	Thermal Cyclers	TP240					•	•					
		TP3000	•	•	•		•	•	•				
Techne	Thermal Cyclers	Touchgene	•	•	•				•				
		Cyclogene	•	•	•				•				
		Genius	•	•	•					•			
		Genius Quad	•	•	•					•			
		Genius (TC412)	•	•	•		•	•	•				
		Flexigene	•	•	•		•	•	•				•
		Touchgene X		•	•		•	•	•				•
		Touchgene Gradient (TC512)	•	•	•		•	•	•				•
Real Time Thermal Cyclers	Quantica					•	•						
Thermo Hybaid	Thermal Cyclers	PCR Sprint	•	•	•		•	•	•				•
		MBS Satellite (Multiblock)	•	•	•		•	•	•				•
		Px2 and PxE	•	•	•		•	•	•				•
		PCR Express and Omni-E	•	•	•		•	•	•				•
		Touchdown	•	•	•		•	•	•				•
Omnigene	•	•	•		•	•	•				•		
Trans- geno- mic	Sequencers	WAVE System					•	•					
Ro- che	Real Time Thermal Cyclers	LightCycler 96								•	•		
		Light Cycler 480								•	•	•	•

The registered trademarks of the mentioned manufacturers belong to the above mentioned companies.

This compatibility chart is a general guide only and subject to error and modifications. We cannot accept any liability or responsibility for the above information.

Ordering Information

Cat. No.	Product Description	Pcs./Box	Pcs./Case	
PCR tubes (0.5 and 0.2 mL)				
0.5 mL	682 201	PCR tube, 0.5 mL, PP, natural , with attached frosted flat cap	1,000	10,000
	682 273	PCR tube, 0.5 mL, PP, red , with attached frosted flat cap	1,000	10,000
	682 274	PCR tube, 0.5 mL, PP, blue , with attached frosted flat cap	1,000	10,000
	682 275	PCR tube, 0.5 mL, PP, green , with attached frosted flat cap	1,000	10,000
	682 276	PCR tube, 0.5 mL, PP, yellow , with attached frosted flat cap	1,000	10,000
	682 277	PCR tube, 0.5 mL, PP, violet , with attached frosted flat cap	1,000	10,000
	682 281	PCR tube, 0.5 mL, PP, assorted , with attached frosted flat cap	1,000	10,000
0.2 mL	684 201	PCR tube, 0.2 mL, PP, natural , without cap	1,000	10,000
	683 201	PCR tube, 0.2 mL, PP, natural , with attached frosted flat cap	1,000	10,000
	683 273	PCR tube, 0.2 mL, PP, red , with attached frosted flat cap	1,000	10,000
	683 274	PCR tube, 0.2 mL, PP, blue , with attached frosted flat cap	1,000	10,000
	683 275	PCR tube, 0.2 mL, PP, green , with attached frosted flat cap	1,000	10,000
	683 276	PCR tube, 0.2 mL, PP, yellow , with attached frosted flat cap	1,000	10,000
	683 277	PCR tube, 0.2 mL, PP, violet , with attached frosted flat cap	1,000	10,000
	683 271	PCR tube, 0.2 mL, PP, assorted , with attached frosted flat cap	1,000	10,000
	683 281	PCR tube, 0.2 mL, real time, clear with attached optically clear cap	1,000	20,000
	671 201	PCR tube, 0.2 mL, PP, natural , with attached domed cap	1,000	10,000
	671 273	PCR tube, 0.2 mL, PP, red , with attached domed cap	1,000	10,000
	671 274	PCR tube, 0.2 mL, PP, blue , with attached domed cap	1,000	10,000
	671 275	PCR tube, 0.2 mL, PP, green , with attached domed cap	1,000	10,000
	671 276	PCR tube, 0.2 mL, PP, yellow , with attached domed cap	1,000	10,000
	671 277	PCR tube, 0.2 mL, PP, violet , with attached domed cap	1,000	10,000
	671 281	PCR tube, 0.2 mL, PP, assorted , with attached domed cap	1,000	10,000
	PCR 8-tube strips (0.2 mL)			
0.2 mL	673 210	PCR 8-tube strip, 0.2 mL, PP, natural , without cap	125	1,250
	673 273	PCR 8-tube strip, 0.2 mL, PP, red , without cap	125	1,250
	673 274	PCR 8-tube strip, 0.2 mL, PP, blue , without cap	125	1,250
	673 275	PCR 8-tube strip, 0.2 mL, PP, green , without cap	125	1,250
	673 276	PCR 8-tube strip, 0.2 mL, PP, yellow , without cap	125	1,250
	673 277	PCR 8-tube strip, 0.2 mL, PP, violet , without cap	125	1,250
	673 271	PCR 8-tube strip, 0.2 mL, PP, assorted , without cap	125	1,250
PCR 8-cap strips				
8-cap	373 250	PCR 8-cap strip, PP, natural, flat , for 673 2XX, for Real Time PCR	125	1,250
	373 270	PCR 8-cap strip, PP, natural, domed , for 673 2XX	125	1,250
	373 273	PCR 8-cap strip, PP, red, domed , for 673 2XX	125	1,250
	373 274	PCR 8-cap strip, PP, blue, domed , for 673 2XX	125	1,250
	373 275	PCR 8-cap strip, PP, green, domed , for 673 2XX	125	1,250
	373 276	PCR 8-cap strip, PP, yellow, domed , for 673 2XX	125	1,250
	373 277	PCR 8-cap strip, PP, violet, domed , for 673 2XX	125	1,250
	373 281	PCR 8-cap strip, PP, assorted, domed , for 673 2XX	125	1,250
	373 292	PCR 8-cap strip, ergonomic, blue/natural, flat	120	2,400
	373 293	PCR 8-cap strip, ergonomic, blue/natural, flat, optical, for Real Time PCR	120	2,400
PCR 8-tube strips attached caps				
0.2 mL	608 201	PCR strips, 0.2 mL, standard, clear, w/attached strip of optical caps for Real Time PCR	125	1,250
	608 281	PCR strips, 0.2 mL, standard, clear, w/individual attached optical caps for Real Time PCR	120	1,200
	671 221	PCR strips, 0.2 mL, low-profile, clear, w/individual attached optical caps for Real Time PCR	120	1,200
	671 231	PCR strips, 0.2 mL, standard, white, w/individual attached optical caps for Real Time PCR	120	1,200
	671 241	PCR strips, 0.2 mL, standard, white, w/attached strip of optical caps for Real Time PCR	125	1,250
	673 283	PCR breakable strips, 0.2 mL, standard, clear, w/individual attached standard dome caps	120	1,200
	673 284	PCR breakable strips, 0.2 mL, standard, clear, w/individual attached optical caps for Real Time PCR	120	1,200
	673 285	PCR strips, 0.2 mL, low-profile, white, w/individual attached optical caps for Real Time PCR	120	1,200

Ordering Information

Cat. No.	Product Description	Pcs./Box	Pcs./Case	
PCR 8-tube strips + caps				
0.2 mL	671 241	PCR strips, 0.2 mL, standard profile, white, with optical strip caps, for Real Time PCR	125	1,250
	673 280	PCR strips, 0.2 mL, standard profile, clear, with optical strip caps, for Real Time PCR	125	1,250
	673 281	PCR strips, 0.2 mL, low profile, clear, with optical strip caps, for Real Time PCR	125	1,250
	673 282	PCR strips, 0.2 mL, low profile, white, with optical strip caps, for Real Time PCR	125	1,250
	673 286	PCR strip tubes, 0.2 mL, with ergonomic flat strip caps	120	2,400
	673 287	PCR strip tubes, 0.2 mL, with ergonomic optical strip caps, for Real Time PCR	120	2,400
PCR Microplates				
96 Well	652 201	PCR microplate, 96 well, PP, natural, without skirt	10	100
	652 230	PCR microplate, 96 well, Rigid Style, natural, full-skirt (case)	20	400
	652 230P	PCR microplate, 96 well, Rigid Style, natural, full-skirt (pack)	20	20
	652 240	PCR microplate, 96 well, PP, natural, half-skirt, ABI "Fast" design	10	100
	652 250	PCR microplate, 96 well, PP, natural, without skirt, universal	10	100
	652 260	PCR microplate, 96 well, PP, natural, half-skirt, ABI design	10	100
	652 270	PCR microplate, 96 well, PP, natural, full-skirt	10	100
	652 285	PCR microplate, 96 well, PP, natural, half-skirt, suitable for LightCycler	10	100
	652 290	PCR microplate, 96 well, PP, natural, half-skirt, suitable for ABI	10	100
	669 285	PCR microplate, 96 well, PP, white, half-skirt, suitable for LightCycler	10	100
384 Well	785 201	PCR microplate, 384 well, PP, natural, full-skirt	15	60
	785 290	PCR microplate, 384 well, PP, natural, full-skirt, suitable for ABI	15	60
	785 235	PCR microplate, 384 well, PP, white, full-skirt, suitable for LightCycler	10	100
	785 286	PCR microplate, 384 well, PP, natural, full-skirt, suitable for LightCycler	10	100
Sealing Films				
Films	676 090	SILVERseal™ aluminum foil sealing film	–	100
	676 070	VIEWseal™ non-tacky transparent sealing film	–	100
	676 040	AMPLIseal™ transparent sealing film	–	100

