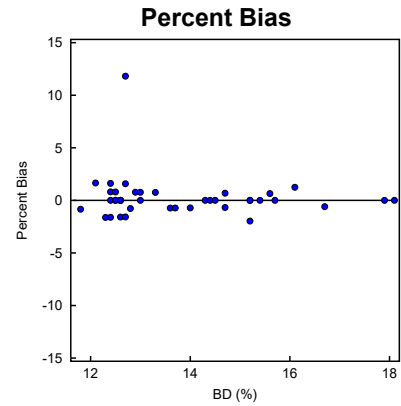
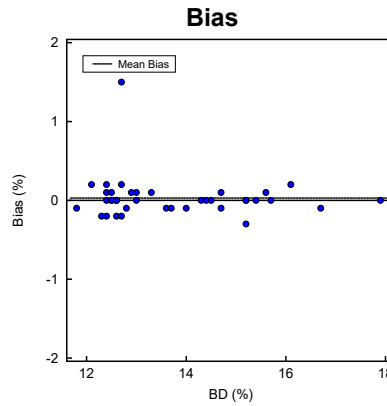
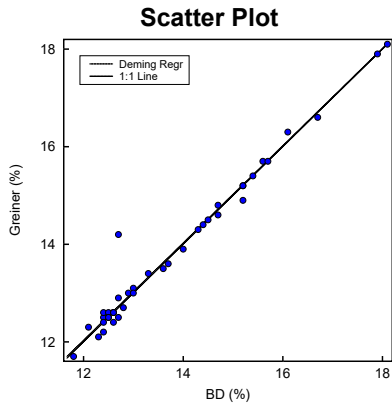


## Alternate Method Comparison

X Method: **BD**

Y Method: **Greiner**



### Regression Analysis

	Deming	Regular
<b>Slope:</b>	0.997 (0.943 to 1.051)	0.983 (0.930 to 1.037)
<b>Intercept:</b>	0.07 (-0.68 to 0.82)	0.26 (-0.49 to 1.01)
<b>Std Err Est:</b>	0.27	0.27

95% Confidence Intervals are shown in parentheses

### Supporting Statistics

Corr Coef (R): 0.9864	Points (Plotted/Total): 40/40
Bias: 0.03	Outliers: Not tested
XMean ± SD: 13.79 ± 1.62	Degrees Freedom: 38
YMean ± SD: 13.82 ± 1.61	Scatter Plot Bounds: None
Std Dev Diff: 0.27	
SubRange Bounds: None	

### Experiment Description

	X Method	Y Method
ExptDate:	20 Dec 2002	20 Dec 2002
Rep SD:	1	1
Result Ranges:	11.8 to 18.1	11.7 to 18.1
Units:	%	%
Analyst:	DIS	DIS
Comment:		

Accepted by: \_\_\_\_\_

Signature

Date

Prepared for: Biochemistry Division -- Ottawa Civic Hospital

By: Technical Marketing -- greiner-bio-one

## Alternate Method Comparison

**X Method: BD**

**Y Method: Greiner**

### Experimental Results

Specimen	X	Y	Bias	Specimen	X	Y	Bias	Specimen	X	Y	Bias
S00001	13.6	13.5	-0.1	S00015	12.4	12.6	0.2	S00029	12.6	12.6	0.0
S00002	14.3	14.3	0.0	S00016	13.7	13.6	-0.1	S00030	15.7	15.7	0.0
S00003	15.2	15.2	0.0	S00017	16.1	16.3	0.2	S00031	15.4	15.4	0.0
S00004	13.0	13.1	0.1	S00018	14.7	14.6	-0.1	S00032	18.1	18.1	0.0
S00005	12.6	12.4	-0.2	S00019	15.2	14.9	-0.3	S00033	12.6	12.6	0.0
S00006	12.5	12.6	0.1	S00020	12.5	12.5	0.0	S00034	14.7	14.8	0.1
S00007	12.3	12.1	-0.2	S00021	12.9	13.0	0.1	S00035	12.4	12.4	0.0
S00008	12.4	12.2	-0.2	S00022	12.7	12.5	-0.2	S00036	15.2	15.2	0.0
S00009	14.0	13.9	-0.1	S00023	12.7	14.2	1.5	S00037	12.7	12.9	0.2
S00010	12.6	12.6	0.0	S00024	17.9	17.9	0.0	S00038	11.8	11.7	-0.1
S00011	13.0	13.0	0.0	S00025	14.5	14.5	0.0	S00039	12.1	12.3	0.2
S00012	12.8	12.7	-0.1	S00026	15.6	15.7	0.1	S00040	12.5	12.5	0.0
S00013	12.4	12.5	0.1	S00027	13.3	13.4	0.1				
S00014	16.7	16.6	-0.1	S00028	14.4	14.4	0.0				

Values with an "X" were excluded from the calculations.