

Essentials in blood collection

Remember the 5 moments of hand hygiene

1. Before touching a patient
2. Before clean procedure
3. After body fluid exposure risk
4. After touching a patient
5. After touching patient surroundings



1 Prepare the patient

- » Test request
- » Approach and greet
- » Identify and position

2

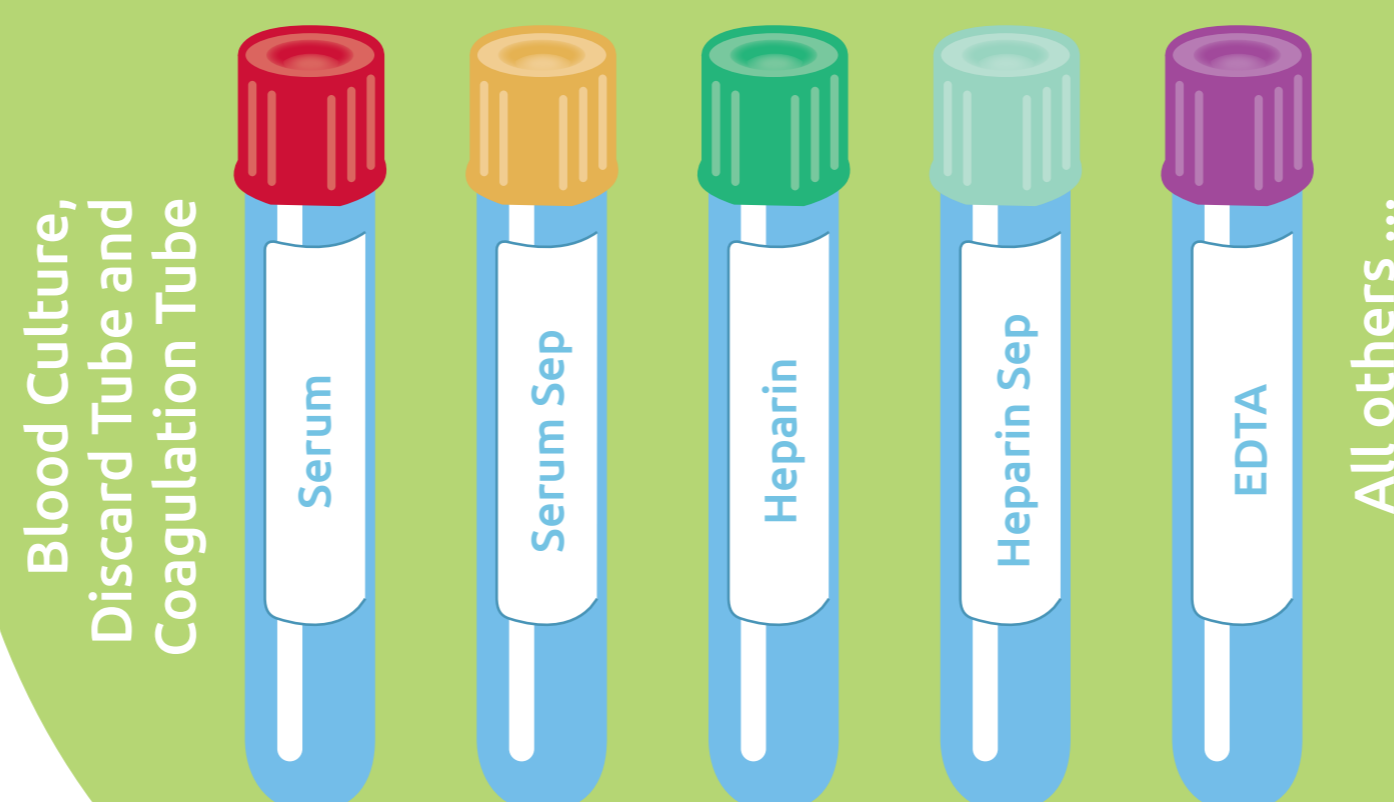


Prepare the products

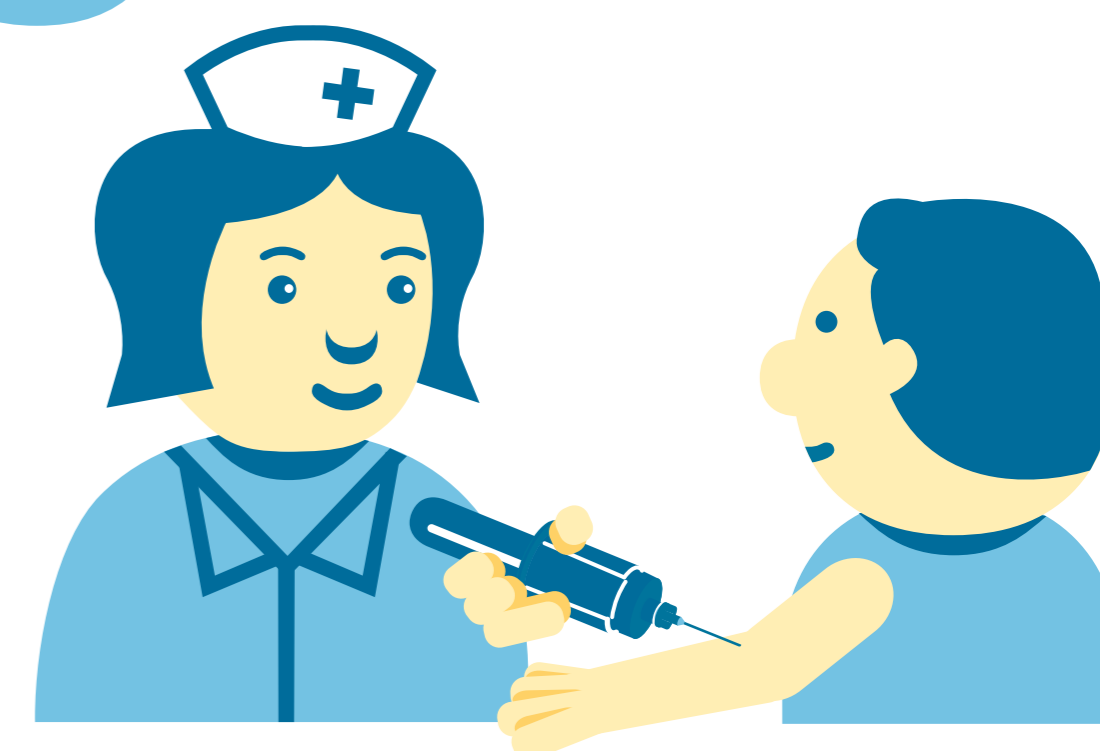
- » Select a puncture site
- » Apply tourniquet *if necessary*
- » Choose suitable product *depending on vein conditions*

1

Recommended Order of draw



3



Collect the sample

- » Puncture *with $\leq 30^\circ$ angle*
- » Fill the tubes *mind the recommended order of draw*
- » Invert the filled tubes *5-10x*

5

Further processing

- » Label the tubes
- » Transportation to lab



4

After care

- » Disposal of sharps
- » Apply a bandage



www.samplix-blc.com

 Samplix[®]

Technology from the
Heart of Europe