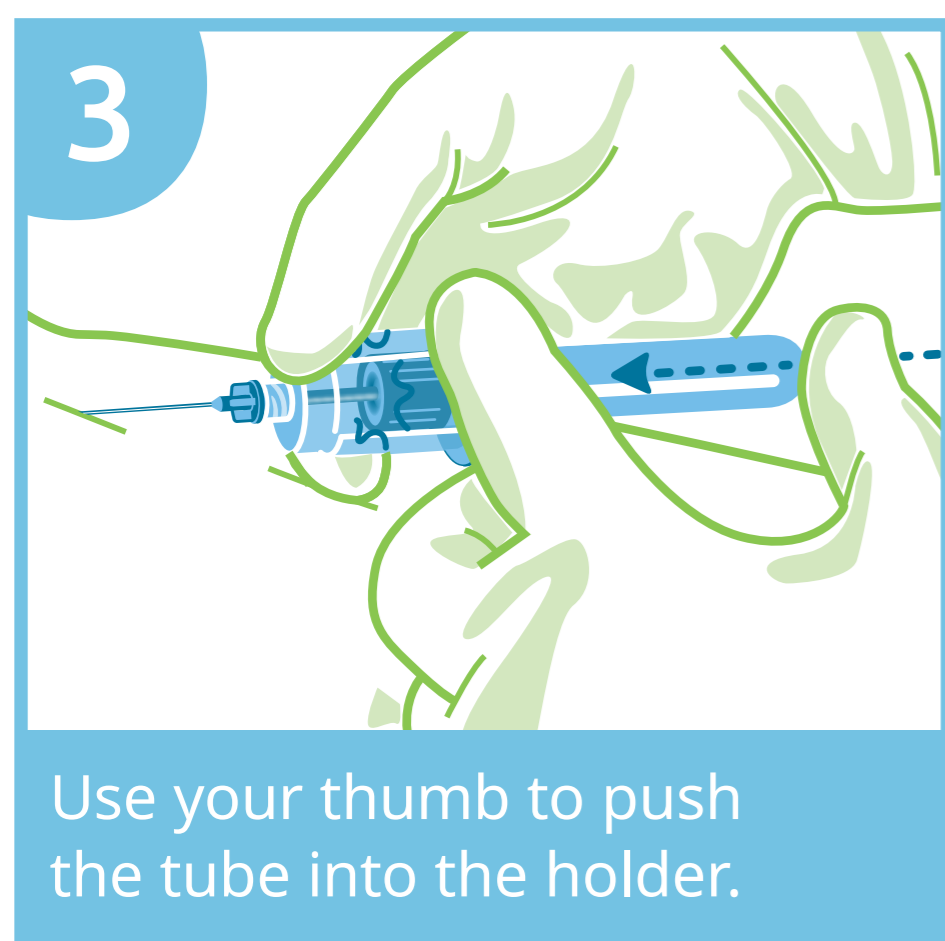
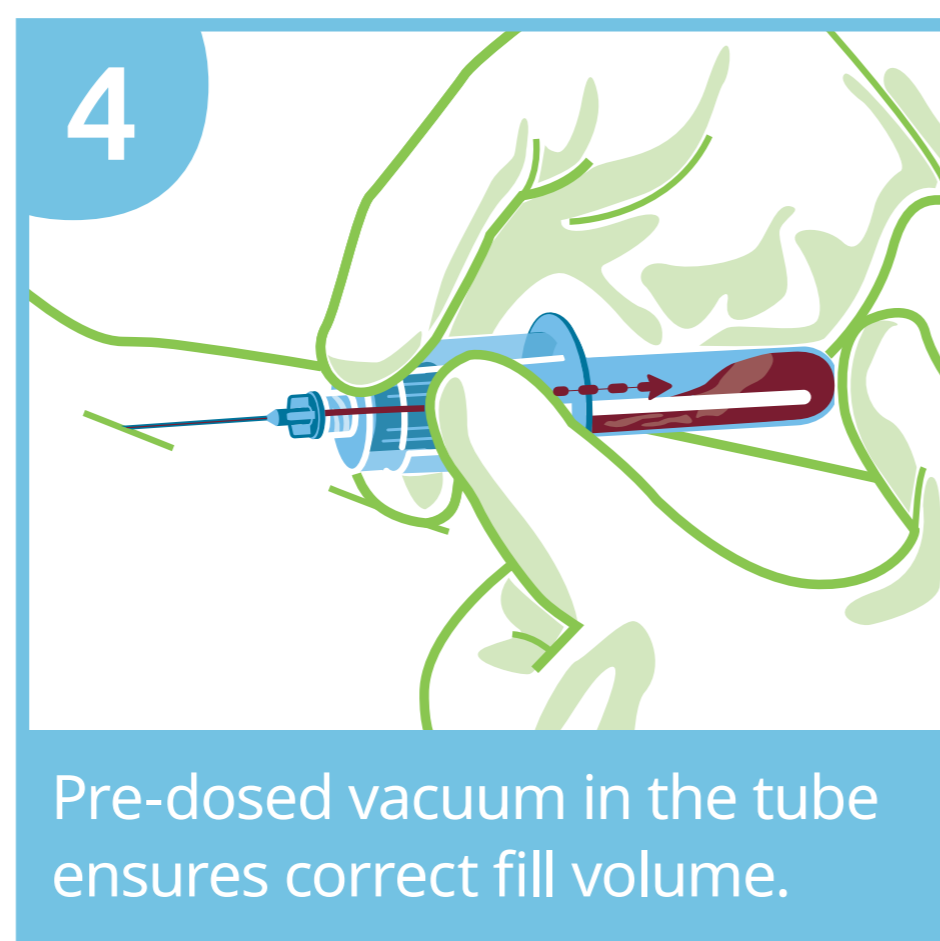


Handling recommendations

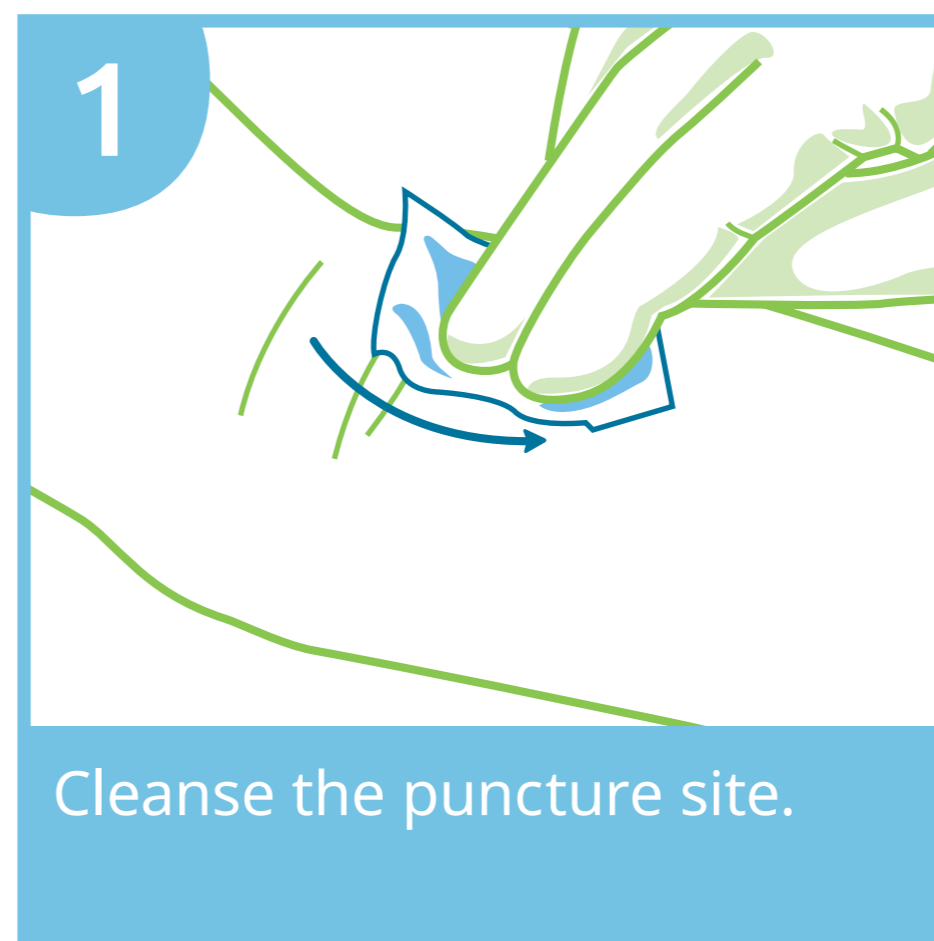
» For venous blood collection with Samplix® «



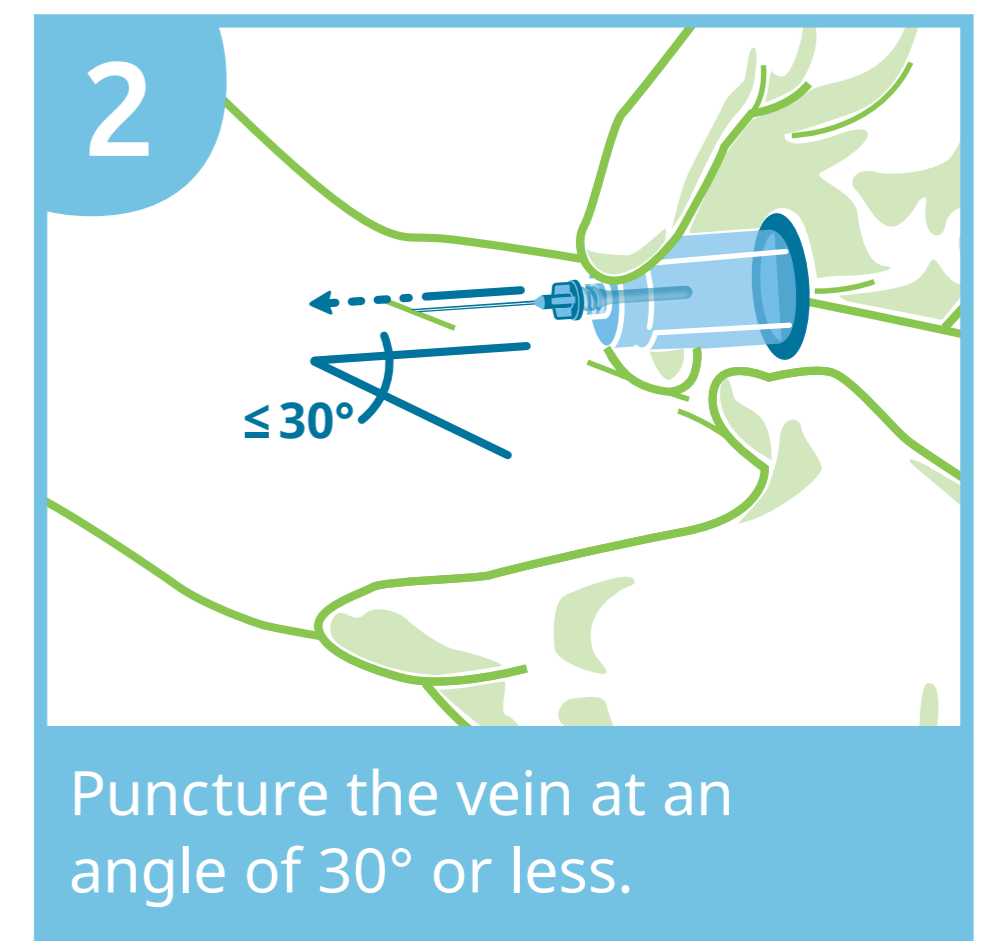
Use your thumb to push the tube into the holder.



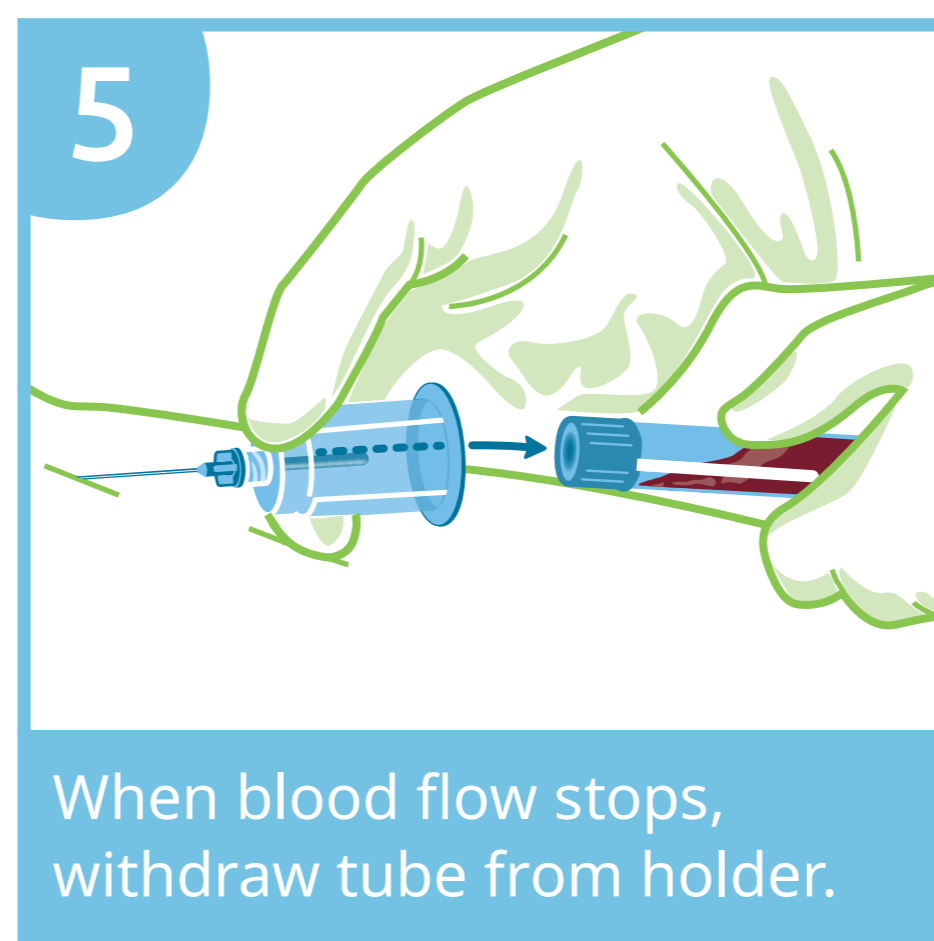
Pre-dosed vacuum in the tube ensures correct fill volume.



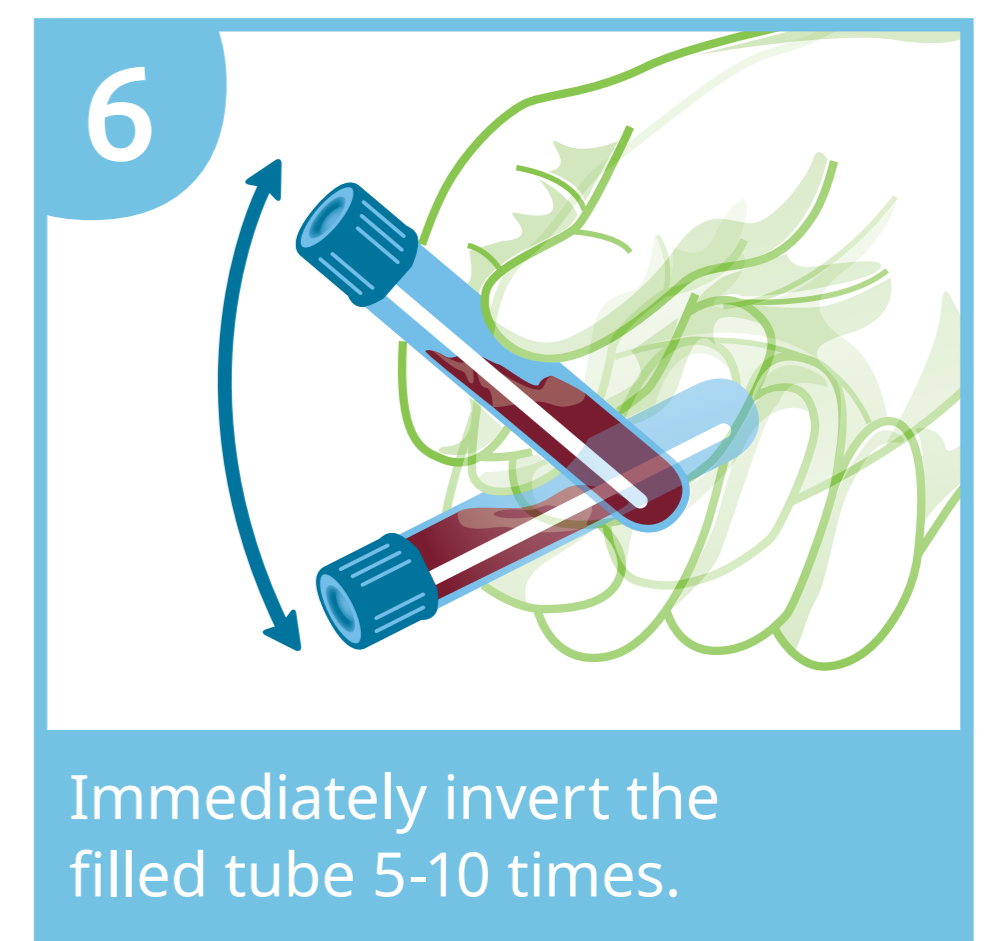
Cleanse the puncture site.



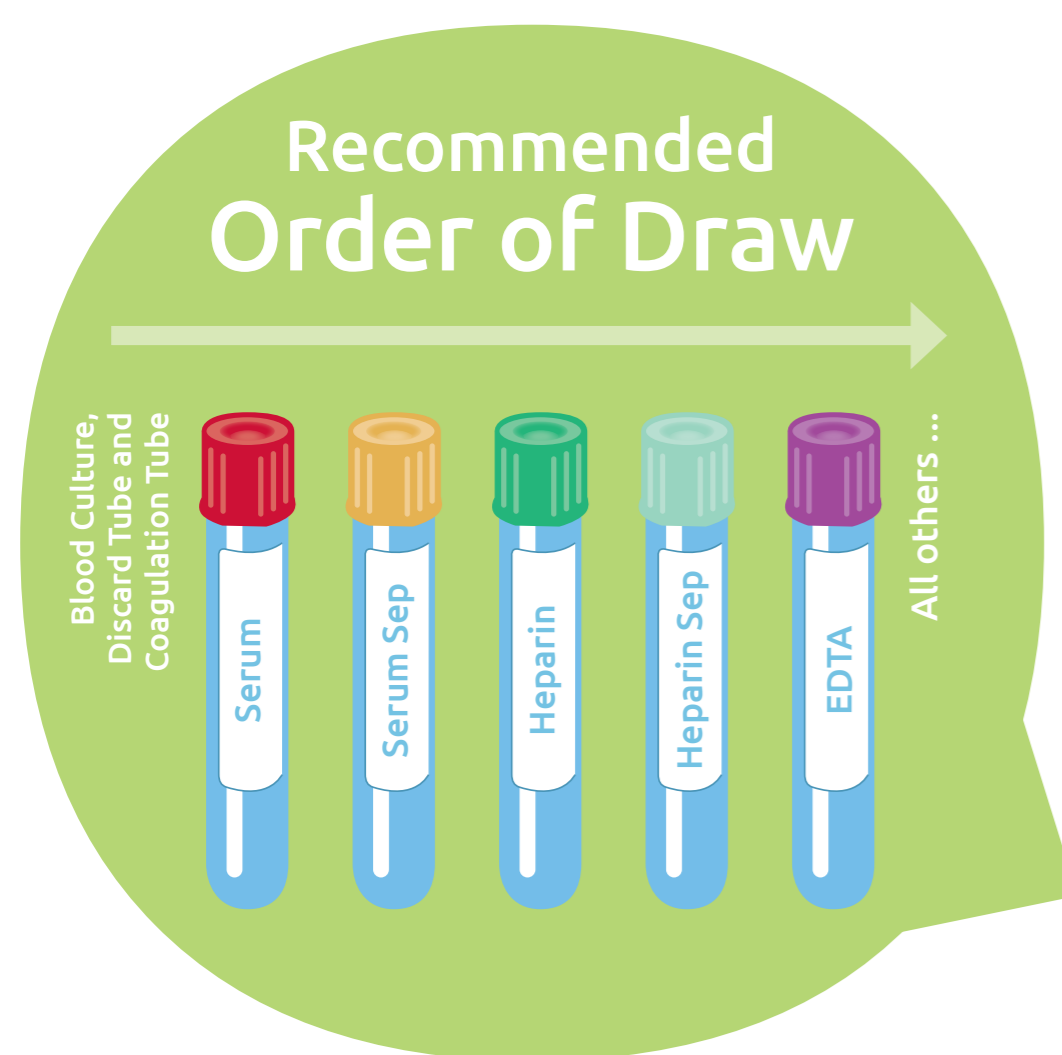
Puncture the vein at an angle of 30° or less.



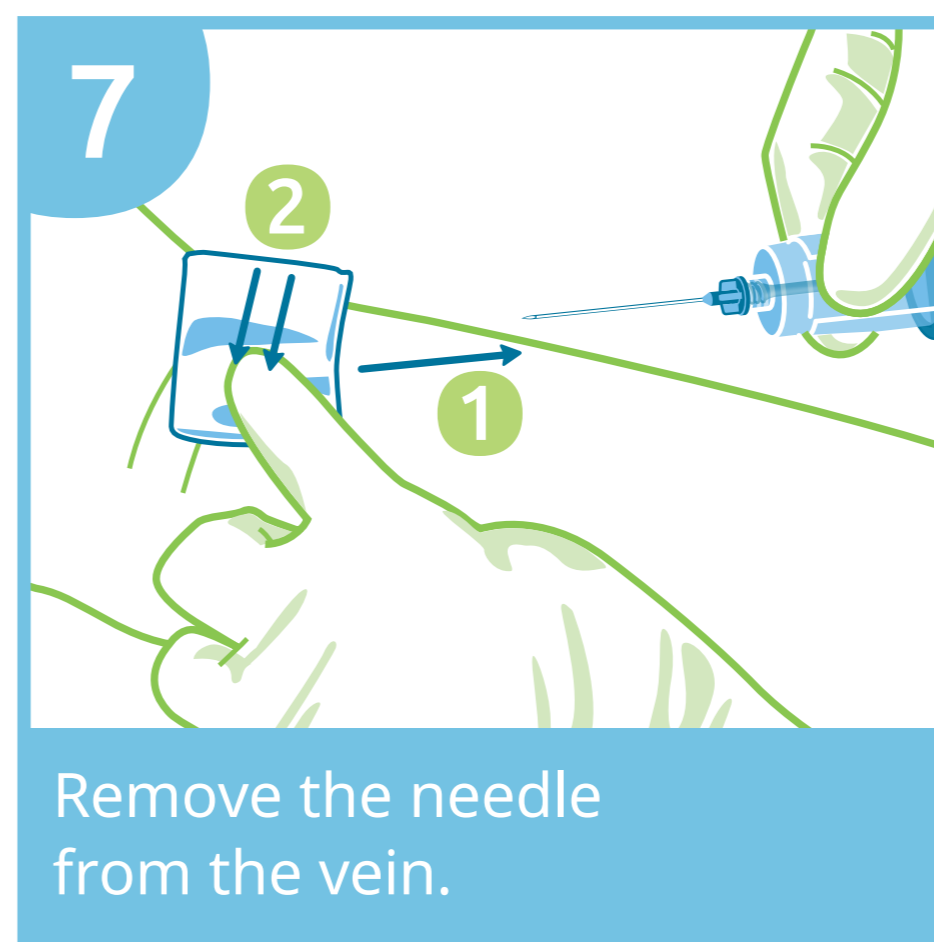
When blood flow stops, withdraw tube from holder.



Immediately invert the filled tube 5-10 times.



» If multiple tubes are required, insert the next tube according to the proper order of draw. «



Remove the needle from the vein.



Dispose of used holder and needle immediately after use.

These instructions are intended to help you take the blood sample correctly and are a recommendation from Greiner Bio-One. The content is based on international standards and current technical literature. Please also observe the guidelines in your institution and country.

Please observe the instructions for use for the venous blood collection.



www.samplix-blc.com

 Samplix®

Technology from the Heart of Europe